

Key Features

- Excel based
- GL Wand add-on
- Load Budget function
- Free format layout
- Real-time validation
- Real-time error correction
- Pre-integrated 11i / R12
- Oracle supported loads
- Support for budget journals
- Multi-book, multi-budgets, single sheet flexibility

About Budget Wand

Budget Wand allows Excel to be used as the front end to the Oracle General Ledger Budgeting functionality.

With Budget Wand, Oracle Financial users can meet their important financial budgeting and forecasting requirements, all from within Excel and with minimal effort and setup. Budget Wand is used for creating and editing models; distribution and collection of budget values and for validation and upload.

Create or edit budget models

Budget models are Excel workbooks that typically contain a mixture of Actual and Budgets values, formulae and formatting as well as cells for entering new budget values.

Actual and Budget values are reported using GL Wand's Get Balance functions, and, entry cells are linked by the Load Budget function. Budget Wand together with Excel enables flexible user defined layouts containing any combination of Actuals, Budgets, Periods and Books as required.

Account	Description	Prior Year Actuals			Current Budget			New Budget Values			Load Budget Status		
		Jan-02 PTD	Feb-02 PTD	Mar-02 PTD	Jan-02 PTD	Feb-02 PTD	Mar-02 PTD	Jan-02	Feb-02	Mar-02	Jan-02	Feb-02	Mar-02
18 7210	Shipping and Transportation	2,873.88	1,116.69	3,411.63	4,500.00	1,500.00	2,000.00	4,500.00	1,500.00	1,800.00	loaded	loaded	loaded
18 7220	Freight	8,020.43	3,350.04	4,234.88	8,000.00	4,000.00	5,000.00	8,000.00	4,000.00	4,000.00	loaded	loaded	loaded
18 7230	Warehousing	16,040.83	6,700.09	8,469.76	16,000.00	4,000.00	4,000.00	16,000.00	4,000.00	3,000.00	loaded	loaded	loaded
18 7420	Utilities	29,316.13	18,484.68	22,099.21	30,000.00	25,000.00	25,000.00	30,000.00	25,000.00	26,000.00	loaded	loaded	loaded
18 7420	Rent Expense	37,548.87	23,845.58	28,186.52	35,000.00	30,000.00	30,000.00	35,000.00	30,000.00	30,000.00	loaded	loaded	loaded
18 7420	Telephone Expenses	17,877.23	10,777.11	12,825.07	20,000.00	4,000.00	10,000.00	20,000.00	4,000.00	11,000.00	loaded	loaded	loaded
18 7510	Postage	7,167.27	4,520.55	5,379.57	5,000.00	3,000.00	4,000.00	5,000.00	3,000.00	4,000.00	loaded	loaded	loaded
21	Total	117,864.24	68,644.74	82,516.64	116,500.00	73,500.00	75,000.00	116,500.00	73,500.00	81,300.00			

“As Budget Wand is Excel based minimal training and IT involvement will be required.”

Budget models contain refreshable functions linking cells directly to Oracle thereby extending the life of a budget model. Budget Administrators can easily create comprehensive excel based models, and reuse them annually or during the multiple iterations typical of a budgeting or forecasting process.

Load Budget function

Budget collection templates are built around the Load Budget Function, allowing active linking of budget entry cells to a particular budget and account. Once values have been entered they can be submitted for Validation and Upload.

Key benefits

- Easy to use
- Flexible
- No implementation
- Rapid deployment
- Comprehensive modelling capability
- Reusable templates
- Refreshable templates
- Minimal training
- Minimal IT involvement
- Faster budgeting, forecasting cycles

Availability

- 11i Beta available
- Special launch pricing until 31 December 2008

About Excel4apps

Excel4apps is a global organisation with offices in the USA, United Kingdom, Australia, South Africa, UAE and resellers in 10+ countries. Excel4apps currently has 2000+ licensed GL Wand users at 100+ E-Business Suite customers around the globe.

www.excel4apps.com
sales@excel4apps.com

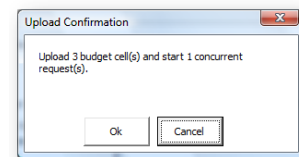
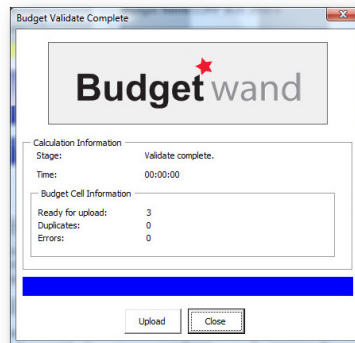
Convert Get Balance function

Budget Wand includes functionality to convert existing GL Wand Get Balance formulae into a Load budget function. Existing GL Wand reports can easily be extended to include columns for budget entry.

Load budget parameters for Budget update	Optional parameters for Budget Journals
Get Balance function	Journal Category
Budget Name	Journal Name
Budget Org	Journal Line Description

Distribution

Budget models can be distributed individually to budget owners for budget entry via email, or mass created and distributed using the included Report Manager Functionality. Budget Wand will support both central and decentralised uploading.



Validate & Upload Range, Sheet or All workbooks

This process validates cells containing Load Budget formulae. Once complete, the user can upload the values into Oracle and automatically initiate the concurrent requests for budget journal upload, or budget value override. The validation process will check and report on the following errors.

Function based validations	Server side pre-load validations
Budget Org exists	Segment security rule test
Budget Org active	Load budget formula is unique
Budget name valid	CCID allows budgeting
Budget not frozen	Account is enabled
Budget active	Account is active
Budget input value validity	Currency is valid
	Account assigned to Budget Org